

# Results of Spring 2023 NJ Graduation Proficiency Assessment (NJGPA)

Presented by  
Samantha Heimple, Director of Curriculum, Instruction & Innovation  
Jeremy Davies, Principal, David Brearley Middle-High School

Presented to the Board of Education  
August 28, 2023





# Overview of NJGPA

- Statute requires the State graduation proficiency assessment to be administered to all grade 11 students. (N.J.S.A. 18A:7C-6)
- NJGPA is designed to measure the extent to which students are graduation ready in English Language Arts (ELA) and Mathematics.
- Graduation readiness is reported separately for each content component.
- The ELA component is aligned to the grade 10 standards.
- The Mathematics component is aligned to Algebra I and Geometry standards.

# 2023 Results



ELA	Graduation Ready	Not Graduation Ready
137	113 (80.5%)	24 (19.5%)

Math	Graduation Ready	Not Graduation Ready
139	64 (46%)	75 (64%)

# NJGPA Across Time



	2022	2023
<b>ELA</b>	24% graduation ready	80.5% graduation ready
	76% not graduation ready	19.5% not graduation ready
<b>Math</b>	28.9% graduation ready	46% graduation ready
	71.1% not graduation ready	64% not graduation ready



# Options for students who have not achieved proficiency

## First Pathway

- Retake and demonstrate proficiency on the ELA and/or math component of the NJGPA.

## Second Pathway

- Meet the minimum required score on one of the ELA assessments listed on the menu of substitute competency tests.
- Meet the minimum required score on one of the mathematics assessments listed on the menu of substitute competency tests.

## Third Pathway

- Meet the criteria of the New Jersey Department of Education (NJDOE) Portfolio Appeal for ELA and/or mathematics.



# State Comparison

2023: Average Scaled Score	State	Kenilworth District
<b>ELA</b>	765	761
<b>Math</b>	734	724

2023: Not Graduation Ready	State	Kenilworth District
<b>ELA</b>	19.5%	17.5%
<b>Math</b>	45%	64%

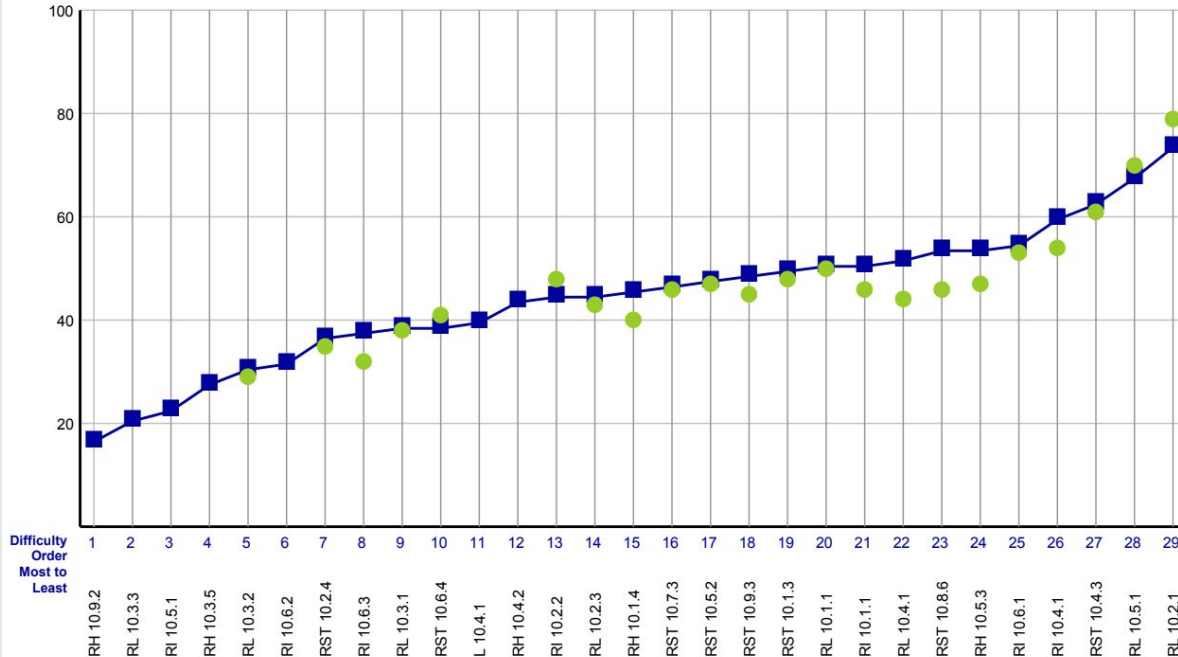


# State Comparison ELA

ENGLISH LANGUAGE ARTS  
New Jersey Graduation Proficiency Assessment, 2022–2023

## Students with Valid Scores (137)

**Purpose:** This report presents the average percent correct by Evidence Statement for district and state.



# State Comparison Math



SPRING 2023

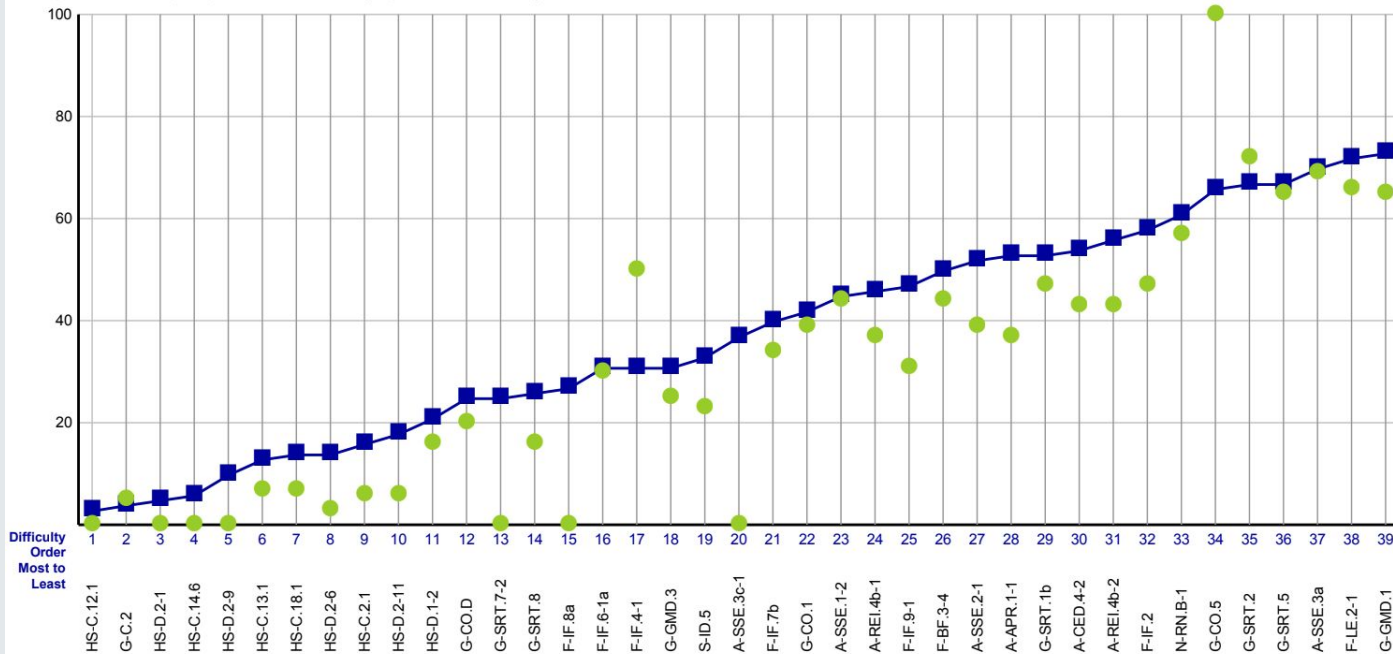
## MATHEMATICS

New Jersey Graduation Proficiency Assessment, 2022–2023



### Students with Valid Scores (139)

**Purpose:** This report presents the average percent correct by Evidence Statement for district and state.







# A Sampling of Standards

- HS-C 12.1 OGL Modeling and Reasoning
- G-C.2, HSG.C.A.2 Geometry
- HD-D.2-1 OGL Modeling and Reasoning
- HS-C. 14.6 Modeling and Reasoning
- HS-D.2-9 Modeling and Reasoning
- G-SRT.7-2 HSG.SRT.C.7 Geometry
- F-IF .8a HSF.IF.C.8.A Functions
- A-SSE.3c-1 HSA.SSE.B.3.C Algebra





# Using the Results in Kenilworth

- Providing additional support to students through a modified intensive program in September-October. Allowing students to retake NJGPA in the fall semester which is new.
- Drive professional learning
- Newly rewritten Algebra 1 and Geometry Curriculum
- Adding an additional math lab in the MS with focus on maintaining and building foundational skills

**Results of Spring 2023  
NJ Graduation  
Proficiency  
Assessment**

**Questions?**

